



FORT LAUDERDALE ORCHID SOCIETY

The purpose of the Society is to stimulate interest, provide education and enable exchange of information among those interested in the culture of orchids in all its aspects.

VOLUME 68 ISSUE 2
FEBRUARY 2018



FEBRUARY MEETING: KEN & JUDY RUSS



Our February speakers will be Judy & Ken Russ, who have been growing orchids for more than 20 years and have won multiple AOS award. After so many years of growing orchids Ken and Judy realized there was a need to share their orchid growing knowledge with all level orchid growers and they decided to create some innovative and practical presentations specially geared to help Florida orchid growers perfect the art of orchid growing.

Ken and Judy currently live in Port St Lucie on a waterway home they affectionately refer to as "The Puddle". Here they grow about 900 orchids, in a shade house, lanai and in a shaded "Pine Forest". They have enjoyed entering many orchid shows, taking part in societal orchid displays, and have received many ribbons and awards along the way. Since 2004, their orchids have received 32 AOS awards and on two occasions, Ken has won the AOS Show Trophy for the best orchid display in an orchid show. Ken loves sharing how he and Judy grow their orchids, including tips they have found successful through the years. (South Florida Orchid Society)

Ken and Judy will help us with the basics for orchid hobbyist. Their talk will include culture, choosing growing areas for orchids, fertilizing, placing orchids in the landscape and more.

Educational exhibit— The Ghost Orchid created by Tara Seucharan (Southern Ontario Orchid Society) and Lynn Seucharan (Trinidad & Tobago Orchid Society)

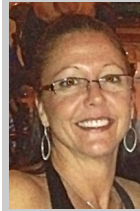


Mark Your Calendar

- February 12, 2018 - Ken & Judy Russ—Backyard Orchid Growing— information for the hobby orchid grower including basics, culture, growing areas, fertilizer, orchids in the landscape and more.
- February 17 & 18 – Port St. Lucie Orchid Show- Port Saint Lucie Botanical Gardens, 2410 SE Westmoreland Blvd., Port Saint Lucie, FL.
- February 24 & 25 - Naples Orchid Society Show - Naples Botanical Garden, 4820 Bayshore Drive, Naples FL,
- March 12, 2018 - Dr. Catherine Mannion, University of Florida Tropical Research & Education Center in Homestead - insects of the orchid world
- April 9, 2018 - Roy Tokunaga of H&R Nurseries returns! - Dendrobium *latouria* hybridizing
- May 14, 2018—Chuck McCartney — Want to learn more about Florida's native orchids that we share with Cuba? Fourth generation Floridian and FLOS Honorary Member Chuck McCartney will share with us a new presentation titled **Native Orchids: The Florida-Cuba Connection**

President's Message

By Gigi Granger



February 1957, the Fort Lauderdale Orchid Society held its first show. The event was in The Atlantic Federal Savings and Loans Building with only a handful of members participating. As interest grew, commercial orchid growers were sought for lectures and to participate in the shows. In the years that followed, a formal orchid show style emerged. For decades, our large floor exhibits have had to follow the show's theme, and standards which are judged by the American Orchid Society Judges. Presently, we are one of only two orchid societies in the United States that continue this traditional formal orchid show.

January 2018, for our Diamond Jubilee, under the leadership of our show chair, Michael Schaberl, we hosted nearly 30 vendors, and 21 national and international AOS Judges. Orchid vendors from Florida, California, Hawaii, Taiwan and Japan transported, and unpacked tens of thousands of orchids to fill the War Memorials' 20,000 square feet of space. The vendors designed 27 exhibits, set up booths and then interacted with orchid patrons for more than 30 hours over the three days. And the most astounding growth since our humble dozen began this tradition, over 90 volunteers participated in the show setup, tear down, manning the membership table and hospitality booth, as well as provided security.

As president, I am proud to be a part of this legacy, and to continue the traditions set forth by our founding members. I would like to thank all of our members for making our Diamond Jubilee show a success. Shine on, and on.

In This Newsletter

February Meeting: Ken & Judy Russ	Page 1
President's Message	Page 1
Educational Exhibit: FL Ghost Orchid	Page 1
Mark Your Calendar	Page 1
January Program	Page 2
FLOS Renewal Time	Page 2
Show Chair Message	Page 2
Welcome New Members	Page 3
January Ribbons	Page 3
Volunteers Needed	Page 3
Keiki Club News	Page 3
Tamami Ribbon Winners	Page 3
Set Up Photos	Page 4
Judging & Exhibit Photos	Page 4
FLOS Member Show Blue Ribbons	Page 5
School Art Competition	Page 5

February Meeting

President's Message

1

Educational Exhibit

Mark Your Calendar

Table of Contents

JANUARY PROGRAM:

January Program

2

FLOS Renewal Time

Message from FLOS Show Chair

ALAN KOCH OF GOLD COUNTRY

Our first speaker for the New Year, was Alan Koch from Gold Country Orchids in Lincoln, California. For over 30 years, Alan has been known for breeding miniature cattleyas. A large part of that breeding program has been for the development of compact cattleyas for warm growing climates. Most of his plants are bred to bloom twice a year, making big flowers that come in small packages.



Alan discussed the many orchid species which are the building blocks for these compact beauties. Many of the cool growing species, needed to be bred to warm growing species or species that have a wide natural growing range, to achieve these results. Cattleya species mentioned, during his talk, included *Cattleya intermedia*, *walkeriana*, *nobilior*, *dolosa*, *luteola* and *schilleriana*.

Rupicolous laelias are a group of species that are including in this breeding. Laelias' are a close relative of cattleyas. These petite orchids add a wonderful array of color to this world of miniatures. Laelias discussed during Alan's talk included, *Laelia briegeri*, *longipes*, *sincorana*, *praestans*, *pumila* and *alaorii*.

The breeding of these species create a vast complexity of hybrids that is the emphasis of Alan's breeding. He mentioned his use of tetraploid orchids. (having more chromosomes) This will establish a hardier hybrid to continue breeding future generations of orchids with a large range of growing conditions. He affirmed the need of good air movement to the roots and that it is critical to allow these plants to dry out between watering. With successful culture of these space saving orchids, we can have a beautiful array of miniatures that can bloom anytime of the year. (Paul Gumos)

FLOS Member Renewal Time

All memberships run January through December so it is time to renew! This year you can do it online at our new membership website: <http://members.flos.org>

You can sign up now at:

<https://members.flos.org> and pay online:

Go to: <https://members.flos.org>

-log in (only members can log in)

-click on Join Us

-go to the bottom of the page and select your membership level and follow the directions

Need help?

mail richackerman@gmail.com



ORCHID JUBILEE - A BEAUTIFUL SUCCESS!

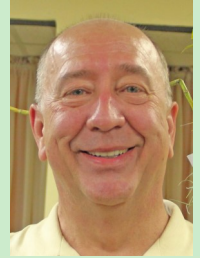


The final accounting for our show is not complete, yet from the all the compliments and comments from the patrons, the smiles on the faces of the vendors, and the breathtakingly beautiful show itself, together we once again, accomplished producing a really smashing show!

The AOS judges were very impressed with all your entries and awarded our member, Clare Garrett 90 points on her Rhy. Gigantea which won the hobbyist grand prize and \$250.00! Members

Mac and Helen Rivenbark of Mac's Orchids won the AOS Show trophy for their magnificent display. The Judges presented the show with a total of 16 awards.

We all should be very proud of our show and I personally want to thank each and every volunteer for your contribution to our success. Some of you worked one shift and others were with me the entire show. Whatever you were able to contribute is appreciated and helped to ensure our success! We are a Wonderful Orchid Society! Michael Schaberl, Show chair



Exhibits



MEMBERS' PAGE

Welcome to our new members:

Oksana Tatarinov

Sara Singer

Terri Glasford

JANUARY RIBBONS

Ang. Memoria Mark Aldridge	Les Corbin	Blue
Bulb. grandiflorum	Stephen White	Blue
C. Dian Jessie	Tony Millet	Blue
C. Phyllis *	Les Corben	Blue
Den. <i>bigibbum</i>	Richard/Julius	Blue
Den. Royal Wings	Susan Muho	Blue
Epi. <i>ciliare</i>	Chuck McCartney	Blue
Lc. Purple Cascade	Debbie Johnson	Blue
Paph. Maudiae	Gus Valverde	Blue
Pda. Nellie Morley	Luanne Betz	Blue
V. Jiraprapa x Asca. Butterfly	Luanne Betz	Blue
V. Kultana Brown x V. Charles Good Fellow	Paul Gerrian/ Francisco Lambert	Blue
V. Pachara Delight	Paul Gerrian/ Francisco Lambert	Blue
V. Violetta	Luanne Betz	Blue
Den. Andree Millar	Luanne Betz	Cultural
Den. Minnie	Olivier Turina	Cultural
Maxillaria <i>valenzuelana</i>	Vicki Hallock	Cultural
Neostylis Lou Sneary 'Blue Bird'	Claire Garrett	Cultural
Asca. Nongnutch x Asca. Betty May Steel	Paul Gerrian/ Francisco Lambert	Red
Bc. Binosa 'Kirk'	Bud Bomboli	Red
Bc. Maikai 'Mayumi'	Richard/Julius	Red
Myc. Louise Adel Fuchs x Myc. Mem. Louise Fuchs x C. <i>walkeriana</i>	Debbie Johnson	Red
Paph. Barbi Playmate 'Hampshire'	Gus Valverde	Red

* indicates registered hybrid

Volunteer needed:

Starting in February, we will begin stationing a door person at the back door. The door person will stand in the inside hallway and open the door for members entering. The meeting will begin at 7:30 and the door person will remain on post until 7:45, after which the door will remain closed and locked until the meeting has concluded. We will post a sign on the door with a number to text/call if you are running late and need someone to open the door after 7:45.

The monthly door person will receive an orchid as a thank you gift for your help. Please, see me to sign up for upcoming meetings. Thank you for all you do. Gigi



Keiki Club News

The FLOS Keikis continue to be active and hard at work learning more and more about orchid culture and successful plant growing. So many were great participants in the Orchid Jubilee, graciously helping out in every area, attending the festivities and of course, buying more orchids for their collections! A small group worked tirelessly on the exhibit under the guidance of Sue Mitchell Grieg, many more helped with the set up and a good group came to clerk for the judges and sit in on the AOS judging. It was a wonderful opportunity for learning as well as meeting lots of terrific people--other members, vendors and judges.

We are sending out a request to all the Keikis, new and experienced, for you to help out with monitoring the door at the general meetings. If anyone is interested in helping out with this new and very important duty, please let us know and we will let you know what the expectations are. It doesn't have to be a continued, regular task but rather a once in a while thing. This is yet another opportunity to lend a hand and get to know people. Also, the "house" committee is always looking for people to help set up before the general meetings and to tear down afterwards.

We will be off to a great start for the new Keiki year with our first meeting at Scott Peplin's! This will take place on Sunday, February 18th at 1:00 PM so mark your calendars. We will be sending an email out about a week prior to the meeting as a reminder and to provide you with more specific information regarding location, parking and what to bring (this will be a potting class).

We would like to congratulate our "outgoing Keikis" and send out our thanks for your enthusiastic participation over the last couple of years. Of course, you are always invited to attend our meetings, providing assistance, support and friendship to the new members of FLOS. We also extend a warm welcome to the new Keikis who have signed up at the show or joined FLOS late last year. We look forward to meeting you and to help you become an expert orchid grower!

Jill Smith (jsmith8146@comcast.net)

Tamami Ribbon Winners

FLOS Members and AOS Student Judges Sandra Block-Brezner & Tony Millet earn a ribbon at the Tamiami Orchid Show:

Student judges are required to create a show exhibit as part of their training program.



FLOS 60TH ANNIVERSARY SHOW & SALE

Set Up (Photos by Craig Barry)



Set Up Photos

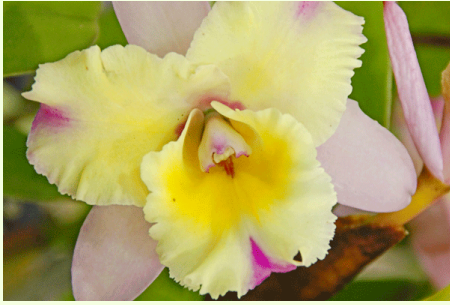
4

Judging & Exhibit Photos

Judging & Exhibits



Individual Blue Ribbon Winners



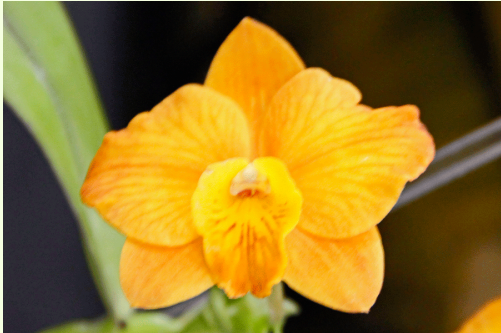
Michael Bryant



Marissa Gittelman



Claire Garret –Best in Show Hobbieist



Makoto Hanajima



Cheryl Babcock



Maria Vittiglio



Scott Perin

School Art Competition



Please support our advertisers. They help pay for the expense of this newsletter.

MARKETPLACE

Market Place

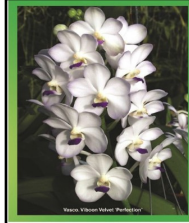
6

Address/Directions



Diana Waterous Centorino
Attorney at Law, P.A.
Also Member of New Hampshire, Massachusetts, Washington, D.C. and Nebraska Bars

1230 Southeast 4th Avenue
Fort Lauderdale, Florida 33316-1912
Tel 954.462.7760
Fax 954.462.7761
DWC@dianawaterouscentorino.com



Carmela Orchids

Sheldon Takasaki

PO Box 277
Hakalau, Hawaii 96710
Tel. 808-963-6189
Fax. 808-963-6125

Web site: www.carmelaorchids.net
Email: carmelaorchids@Hawaii.rr.com



Norma Jeanne Flack D.O.
Board Certified Eye Surgeon

Glaucoma Specialist
Cataract & Laser Surgery
Oculoplastics
Eye Exams
Botox / Fillers

Cross Medical Building
2334 NE 53rd Street • Ft. Lauderdale, FL 33308
954-776-0292



Green Barn Orchid Supplies

Everything you need to grow beautiful orchids

Co-Proprietors: Lynn Lappin and Hyla Levine

5185 Conklin Drive
Delray Beach, FL 33484
(561) 499-2810
(fax) (561) 989-0850

Web site: www.greenbarnorchid.com



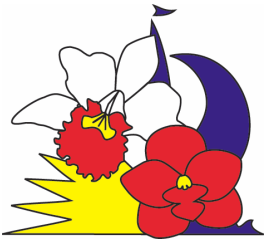
Olivier Turina, P.A.
Realtor, GRI

C 954-591-1487
OlivierFTL@gmail.com
2039 Wilton Dr., Wilton Manors, FL 33305
Français - Italiano - Deutsch - Nederlands

TurinaRussell Network

Thank you to our kitchen volunteers: Kathy Homann, Deb Johnson & Fran Renguso.

Kathy Homann, Deb Johnson, Shelly Jones, Carol Jones, Norma Jean Flack, Zoe Bejar, Carrie Ackerman



Fort Lauderdale Orchid Society

P.O. Box 4677

Fort Lauderdale, FL 33338

Regular Meetings: Second Monday of each month
Time: 7:30 pm
Place: Christ Lutheran Church Social Hall
1955 East Oakland Park Blvd.
Fort Lauderdale, FL 33306

Label here

Directions: From I 95 take East Oakland Park Blvd. for 2.4 miles, turn left on NE 20th Ave. Or take US -1 (Federal Hwy.) to Oakland Park Blvd. west for two blocks, turn north on NE 20th Ave. Park in the rear of the church which is on the NW corner of Oakland Park Blvd. and NE 20th Ave.

President: Gigi Granger
1st Vice President: Rich Ackerman
2nd Vice President: Zoe Bejar
Recording Sec.: Vicki Hallock
Corresponding Sec.: Jijll Smith
Treasurer: Brian Boyle
Newsletter: Ginny Salus, Editor - 954-532-7637
Website: www.FLOS.org